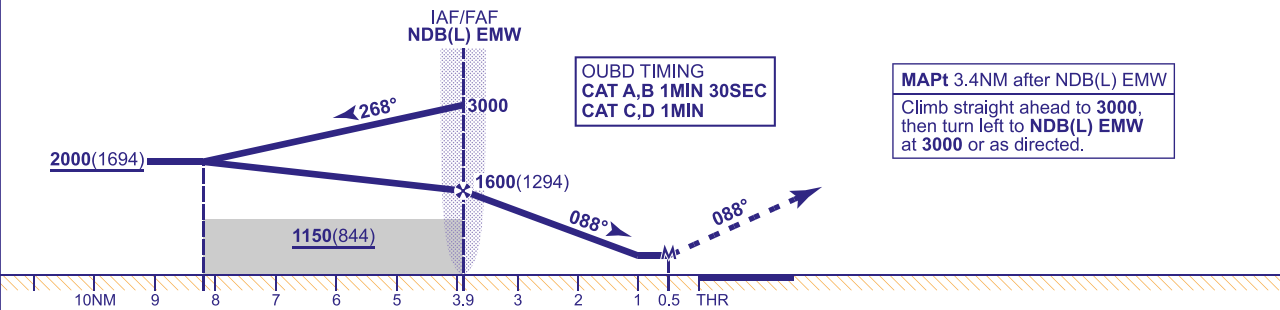
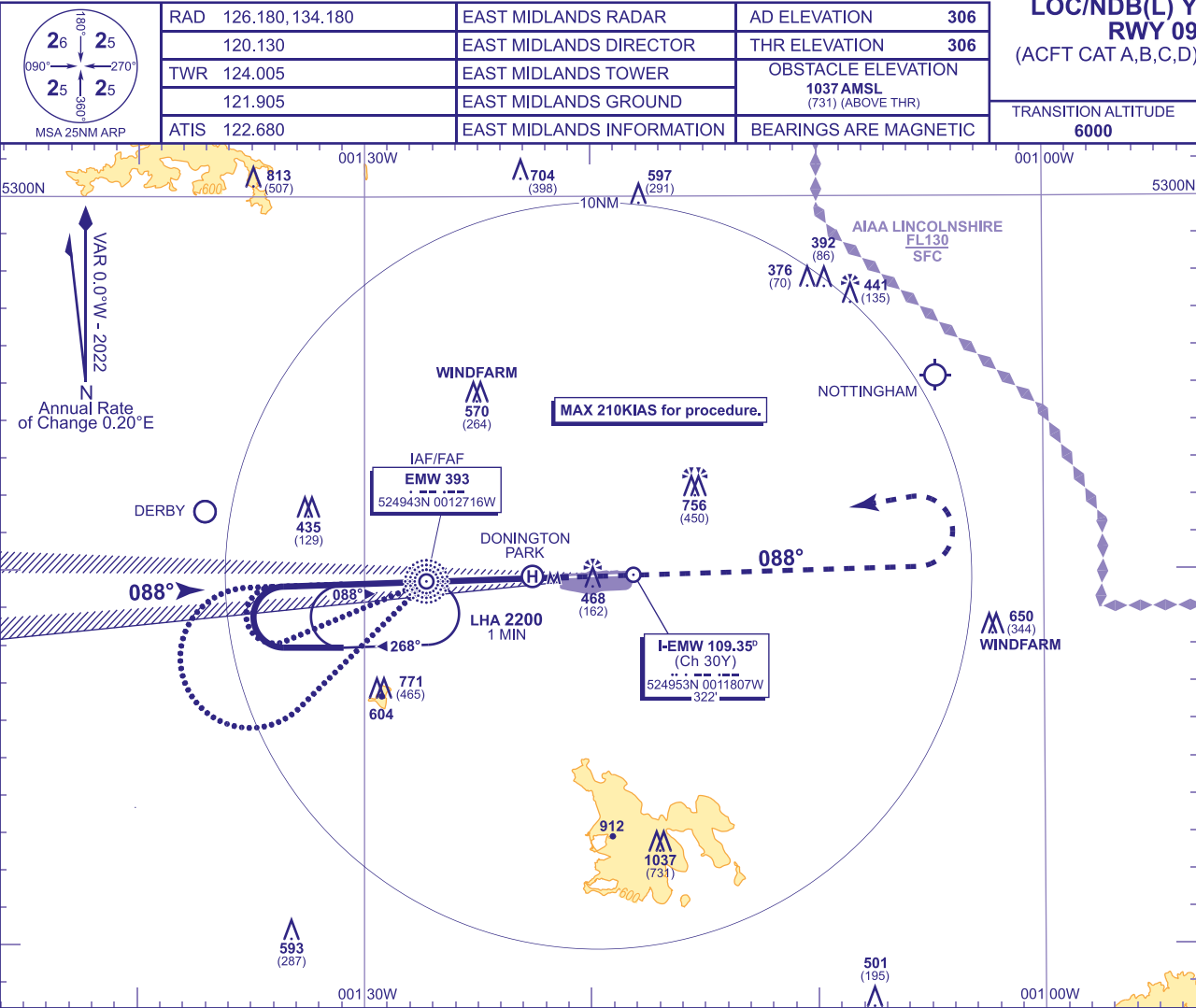


INSTRUMENT APPROACH CHART - ICAO

EAST MIDLANDS  
LOC/NDB(L) Y  
RWY 09  
(ACFT CAT A,B,C,D)



Aircraft Category		A	B	C	D	Rate of descent	G/S KT	160	140	120	100	80
OCA (OCH)	Procedure	670(364)	670(364)	670(364)	670(364)		FT/MIN	850	740	640	530	420
VM(C)OCA (OCH AAL)	Total Area	770(464)	800(494)	1160(854)	1160(854)	NDB(L) EMW to MAPt (3.4NM)	MIN:SEC	1:17	1:28	1:42	2:03	2:34

**ALTERNATIVE PROCEDURE**  
Notify ATC. Fly outbound leg of baseturn on NDB(L) EMW QDR 248° for 1MIN 45SEC (CAT A,B), NDB(L) QDR 231° for 1MIN 15SEC (CAT C,D) descending to not below 2000(1694), then turn right to establish on the LOC. MAX 210KIAS.

- NOTE**
- Aircraft unable to receive DME I-EMW notify ATC.
  - Lowest altitude to commence procedure from hold is 3000.
  - Aircraft will normally be required to hold not lower than 3000.